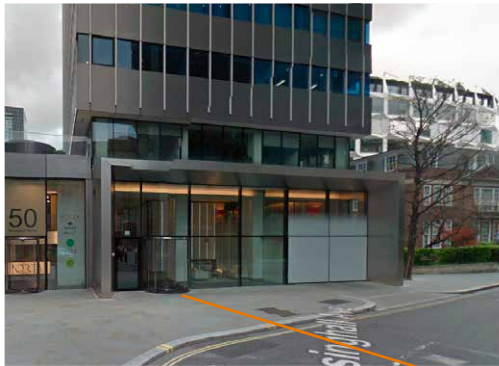




International Association of Oil & Gas Producers

## Visit our Registered Office, London

Level 14 City Tower, 40 Basinghall Street, London, EC2V 5DE, United Kingdom  
T +44 (0)20 3763 9700 | reception@iogp.org | www.iogp.org



Access to building is via **Basinghall Avenue**, next door to no 50.

If approaching from North (Moorgate & Liverpool St stations) by foot, there is **pedestrian access to Coleman St off London Wall** (marked in orange on map)





International  
Association  
of Oil & Gas  
Producers

## Visit our Registered Office, London

Level 14 City Tower, 40 Basinghall Street, London, EC2V 5DE, United Kingdom  
T +44 (0)20 3763 9700 | reception@iogp.org | www.iogp.org

### How to reach IOGP in London

#### From Heathrow Airport

- Catch Heathrow Express to Paddington
- Change to Underground
- Take Circle or Hammersmith & City line (eastbound)
- Exit at Moorgate Underground Station

#### From Gatwick Airport

- Catch Thameslink to Farringdon Rail station
- Change to Underground
- Take Circle, Hammersmith & City line or Metropolitan line (eastbound)
- Exit at Moorgate Underground Station

#### From Stansted Airport

- Catch Stansted Express to Liverpool St Station

#### From London City Airport

- Catch DLR to Bank DLR Station
- Walk to IOGP office (approx 8 minutes via Princes St and Basinghall St); or
- Change to Underground
- Take Northern line (northbound)
- Exit at Moorgate Underground Station

#### Walking From Moorgate Underground

- Take exit marked "Moorgate West Side/ Finsbury Square"
- Turn right and walk down Moorgate
- Turn right onto London Wall
- Cross the road and walk down Coleman St pedestrian access
- Turn right onto Basinghall Ave

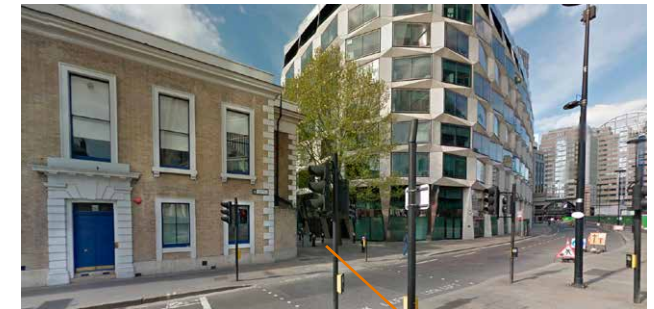
#### Walking From Liverpool St Station

- As you exit the platform you will see the Underground station opposite (to the right)
- Go up the escalator there (after the row of ATMs) and you will exit Liverpool St Station at the bottom left corner shown on our map
- Walk across the pedestrian zone and down Old Broad St
- Turn right onto London Wall
- Cross the road and walk down Coleman St pedestrian access
- Turn right onto Basinghall Ave

#### Walking up Basinghall from South (such as Bank)



#### Walking from North (such as Moorgate or Liverpool St)



London Wall, view to Coleman St pedestrian access



Looking down Basinghall Ave



# London Hotels

Prices for Standard Double Room. VAT included.  
Please note prices are as of January 2017 and may vary.

## City of London Hotels

### Premier Inn London Bank

£114 per night

20 St Mary at Hill, London EC3R 8EE

(0.8 miles from City Tower)

<http://www.premierinn.com/gb/en/hotels/england/greater-london/london/london-bank-tower.html>

### Novotel London Tower Bridge

£159 per night

10 Pepys St, London EC3N 2NR

(1.0 mile from City Tower)

<http://www.novotel.com/gb/hotel-3107-novotel-london-tower-bridge/index.shtml>

### DoubleTree by Hilton Hotel London – Tower of London

£199 per night

7 Pepys St, London EC3N 4AF

(1.0 mile from City Tower)

<http://doubletree3.hilton.com/en/hotels/united-kingdom/doubletree-by-hilton-hotel-london-tower-of-london-LONTLDI/index.html>

### Apex London Wall Hotel\*

£262 per night

7-9 Copthall Ave, London EC2R 7NJ

(0.3 miles from City Tower)

<https://www.apexhotels.co.uk/apex-london-wall-hotel>

Promo Code: 29255290

## Westminster Hotels

### Strand Palace Hotel

£177 per night

372 Strand, London WC2R 0JJ

<https://www.strandpalacehotel.co.uk>

### Radisson Blu Edwardian Kenilworth Hotel

£189 per night

97 Great Russell St, Fitzrovia, London WC1B 3BL

<https://www.radissonblu-edwardian.com/london-hotel-gb-wc1b-3lb/gbkenilw>

### Club Quarters Hotel Trafalgar Square

£214 per night

8 Northumberland Ave, London WC2N 5BY

<https://clubquartershotels.com/locations/club-quarters-hotel-trafalgar-square-london>

### Grange Holborn Hotel\*

£216 per night

50-60 Southampton Row, London WC1B 4AR

<https://www.grangehotels.com/business>

Add a Code: OANDG

\* IOGP has a corporate rate with this hotel

# London Hotels

Prices for Standard Double Room. VAT included.  
Please note prices are as of January 2017 and may vary.

## Kensington and Victoria Hotels

### Millennium Gloucester Hotel London Kensington

4-18 Harrington Gardens, London SW7 4LH

<https://www.millenniumhotels.com/en/london/millennium-gloucester-hotel-london-kensington/>

£156 per night

### DoubleTree by Hilton Hotel London – Westminster

30 John Islip St, Westminster, London SW1P 4DD

<http://doubletree3.hilton.com/en/hotels/united-kingdom/doubletree-by-hilton-hotel-london-westminster-LONWMDI/index.html>

£189 per night

## Paddington Hotels

### Novotel London Paddington

3 Kingdom St, London W2 6BD

<http://www.novotel.com/gb/hotel-6455-novotel-london-paddington/index.shtml>

£164 per night

### Hilton London Metropole

225 Edgware Rd, London W2 1JU

<http://www.hiltonlondonmet.com/>

£164 per night

## Waterloo Hotels

### Premier Inn London Waterloo

85 York Rd, London SE1 7NJ

<http://www.premierinn.com/gb/en/hotels/england/greater-london/london/london-waterloo-westminster-bridge.html>

£108 per night

### Novotel London Waterloo

113 Lambeth Rd, Lambeth, London SE1 7LS

<http://www.novotel.com/gb/hotel-1785-novotel-london-waterloo/index.shtml>

£119 per night

### Hampton by Hilton London Waterloo

157 Waterloo Road, London SE1 8XA

<http://hamptoninn3.hilton.com/en/hotels/united-kingdom/hampton-by-hilton-london-waterloo-LONWLHX/index.html>

£149 per night

### Park Plaza Westminster Bridge London

200 Westminster Bridge Rd, Lambeth, London SE1 7UT

<https://www.parkplaza.co.uk/london-hotel-gb-se1-7ut/gbwestmi>

£189 per night